

---

# USER MANUAL

**MODEL NUMBER:**  
**1LSP**  
**2LSP**

**0.3 (1.2 liter) and 0.5 gallon (2 liter) Pump-  
Up Spray Unit**

---

**English (Original Instructions)**

---

## READ ALL INSTRUCTIONS BEFORE OPERATING EQUIPMENT

# WARNING



### Read this manual completely and understand the machine before operating or servicing it.

- Read all instructions before installing or operating unit.
- Always wear appropriate personal protective equipment (PPE) when operating or servicing unit.
- Always follow all chemical safety precautions and handling instructions provided by the chemical manufacturer and Material Safety Data Sheet (MSDS).
- If this unit is modified or serviced with parts not listed in this manual, the unit may not operate correctly.
- Never point the discharge wand at yourself, another person, or any object you do not want covered in chemical.
- Never leave unit unattended while pressurized.
- Always depressurize unit before attempting to remove the pump assembly.
- Always depressurize unit after use (as described in the After Use Instructions). Always store unit depressurized.
- Do not pressurize unit by any means other than the built-in pump assembly.
- Do not modify or remove pressure relief valve. Do not use unit if pressure relief valve is not operational.
- Always flush the unit with fresh water for 5 minutes when switching from an alkaline to an acid or an acid to an alkaline.
- Always carry unit by the carrying handle. Never lift or carry the unit by the pump handle or the wand.
- Never use unit with hydrocarbons or flammable products.
- Do not exceed a fluid temperature of 100°F (37°C).

### PROTECT THE ENVIRONMENT

Please dispose of packaging materials, old machine components, and hazardous fluids in an environmentally safe way according to local waste disposal regulations.



Always remember to recycle.

\*Specifications and parts are subject to change without notice.

REQUIREMENTS	
Liquid temperature range	40-100°F (4.4-37°C)
Chemical compatibility	Chemical products used with this equipment must be formulated for this type of application and compatible with unit materials and pump seals. For more information on chemical compatibility, consult the manufacturer or MSDS for your product or contact our customer service department.

SPECIFICATIONS		
	1L10X	2L10X
Power type	Manual	
Chemical pickup type	Draws from pre-mixed solution	
Number of products unit can draw from	One product	
Capacity	0.32 gallons (1.2 liters)	0.53 gallons (2 liters)
Discharge wand/tip type	Polypropylene trigger handle with 80° fan tip (STB80002)	
Output distance	1-2 ft. (0.3-0.6 m)	
Pump seals	Viton	

## READ ALL INSTRUCTIONS BEFORE OPERATING EQUIPMENT

### Operation Instructions:

1. Ensure all air pressure is released from unit by pulling up on the red pressure relief valve.
2. Securely hold the unit and unscrew the pump assembly (HP-PA) from the tank in a counter-clockwise motion.
3. Follow all instructions from chemical manufacturer. Fill tank 3/4 of the way with pre-mixed solution. (Note: Do not overfill tank with solution.)
4. Securely hold the tank and screw the pump assembly (HP-PA) back on in a clockwise motion.
5. Pressurize the tank by pumping approximately 20 to 25 times, or until it become difficult to pump. (Note: The pressure relief valve will leak if the air pressure is too high. Do not overfill tank with air)
6. To start spraying, point the wand assembly at the area you wish to spray and press down on the On/Off control to discharge solution. Release On/Off control to stop spraying.

### After Use Instructions:

1. Ensure all air pressure is released from unit after each use by pulling up on the red pressure relief valve.
2. It is recommended to always empty out remaining solution and run fresh water through the unit to rinse all parts thoroughly after each use and before storage.

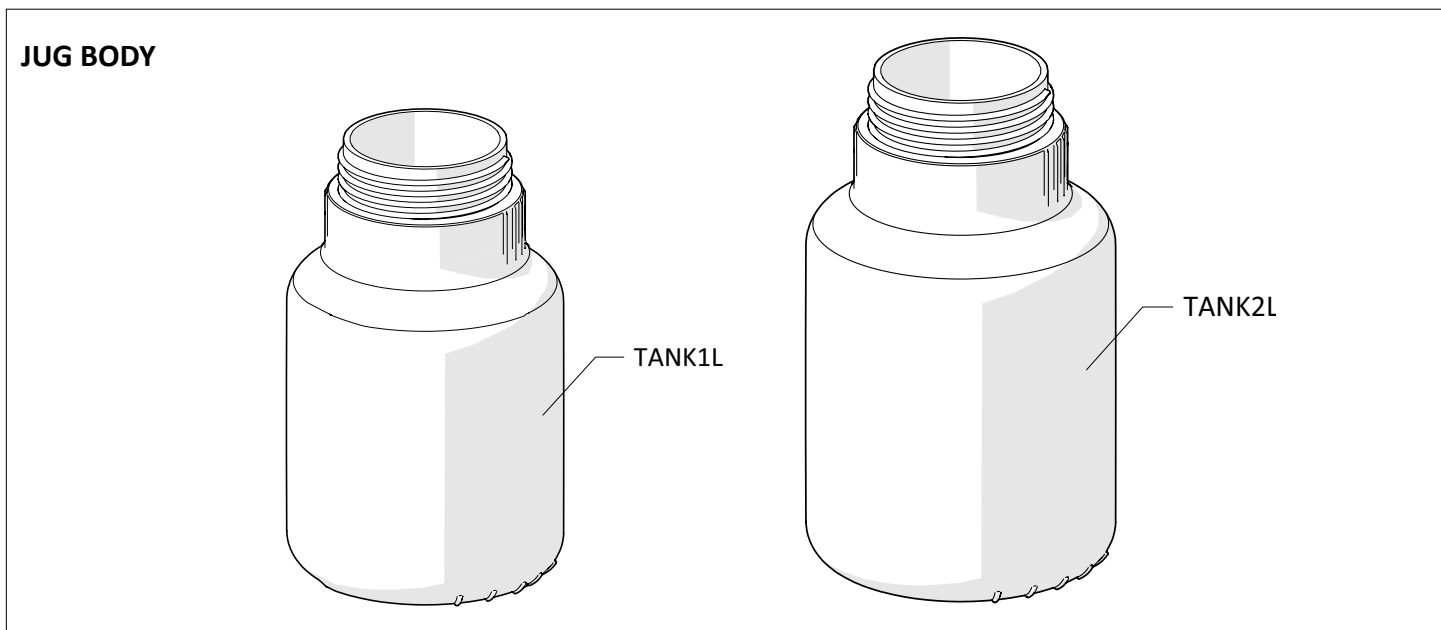
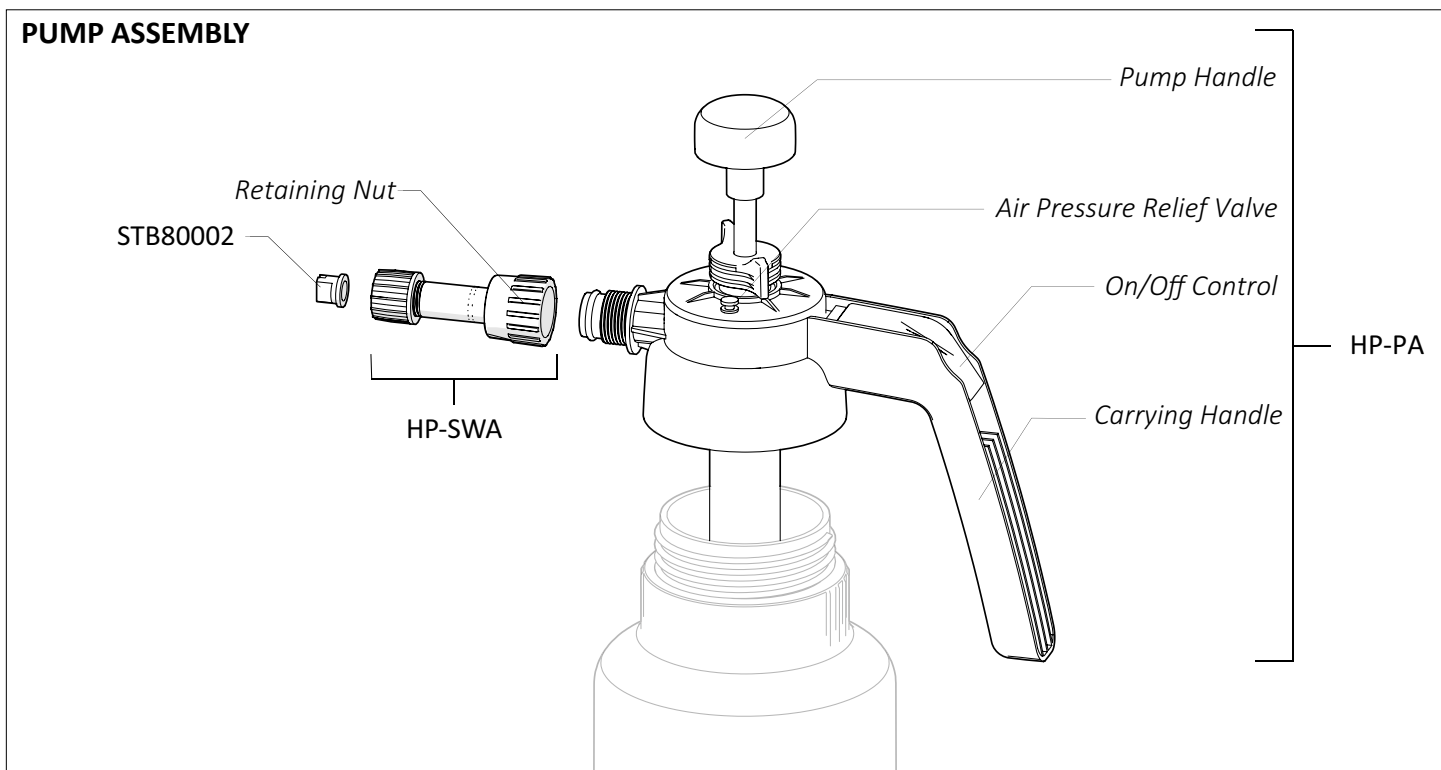
### Maintenance Instructions:

*Warning: Always depressurize unit before performing maintenance.*

To keep your unit operating properly, periodically perform the following maintenance procedures:

- Check the pump assembly for wear and leaks.
- Check the suction tube and screen for debris and clean as needed.
- Periodically lubricate the pump seal with a food safe lubricants. To lubricate the pump seal, raise pump handle and apply 5 to 10 drops of food safe lubricant between pump and pump sleeve. NEVER USE LUBRICANTS SUCH AS WD40.

**READ ALL INSTRUCTIONS BEFORE OPERATING EQUIPMENT**



ITEM NUMBER	DESCRIPTION
HP-PA	HAND PUMP-PUMP ASSEMBLY
HP-SWA	HAND PUMP-WAND ASSEMBLY FOR SPRAY UNITS
STB80002	BUTTON SPRAY TIP - FLAT FAN - 110 DEGREE 0.8 GPM - PVDF

ITEM NUMBER	DESCRIPTION
TANK1L	TANK FOR 1L10X-1.2 LITER/0.32 GAL
TANK2L	TANK FOR 2L10X-2 LITER/0.53 GAL